



# Advantage<sup>®</sup> II

## Large Cat

### Once-A-Month Topical Flea Prevention and Treatment for Cats

For Use ONLY on Cats 8 Weeks and Older and Weighing Over 9 lbs.

#### READ THE ENTIRE LABEL BEFORE EACH USE

For the Prevention and Treatment of Flea Infestations on Cats

- Kills flea life stages
- Controls existing flea infestations on your cat and prevents further infestations
- Kills fleas on cats within 12 hours of application
- Convenient, easy-to-apply topical solution
- Fragrance-free
- Waterproof, after 24 hours

#### ACTIVE INGREDIENTS ..... % By Weight

Imidacloprid ..... 9.10 %

Pyriproxyfen ..... 0.46 %

OTHER INGREDIENTS ..... 90.44 %

TOTAL ..... 100.00 %

### KEEP OUT OF REACH OF CHILDREN CAUTION

#### FIRST AID

**IF SWALLOWED:** • Call a poison control center or doctor immediately for treatment advice. • Have person sip a glass of water if able to swallow. • Do not induce vomiting unless told to do so by the poison control center or doctor. • Do not give anything by mouth to an unconscious person.

**IF IN EYES:** • Hold eye open and rinse slowly and gently with water for 15–20 minutes. Remove contact lenses, if present, after the first 5 minutes, then continue rinsing eye. • Call a poison control center or doctor for treatment advice.

#### HOT LINE NUMBER

Have the product container or label with you when calling a poison control center or doctor, or going for treatment. For medical emergencies call 1-800-422-9874. For consumer questions call 1-800-255-6826.

#### NOTE TO PHYSICIAN

Treat the patient symptomatically.

#### PRECAUTIONARY STATEMENTS

##### HAZARDS TO HUMANS

**CAUTION:** Harmful if swallowed. Causes moderate eye irritation. Avoid contact with eyes and clothing. Wash hands after handling and before eating, drinking, chewing gum, using tobacco or using the toilet.

#### HAZARDS TO DOMESTIC ANIMALS

**For external use only.** Do not apply to cats or kittens under 8 weeks of age or weighing less than 9 lbs. As with any product, consult your veterinarian before using this product on debilitated, aged, pregnant or nursing cats. Individual sensitivities may occur after using ANY pesticide product for cats. If signs persist, or become more severe, consult a veterinarian immediately. If your cat is on medication, consult your veterinarian before using this or any other product.

**Side Effects:** Monitor your cat after application. Side effects may include signs of skin irritation such as redness, scratching, or other signs of discomfort. Gastrointestinal signs such as hypersalivation, vomiting or diarrhea have also been reported. If these or other side effects (such as lethargy) occur, consult your veterinarian or call 1-800-422-9874.

For consumer questions call  
1-800-255-6826.

For medical emergencies call  
1-800-422-9874.

#### DIRECTIONS FOR USE

It is a violation of Federal Law to use this product in a manner inconsistent with its labeling.

#### RESTRICTIONS:

- Do not apply more than one (1) tube per treatment, even for larger cats.
- Do not have contact or allow children to have contact with treated area until completely dry.
- Do not allow children to apply the product.

#### HOW TO OPEN

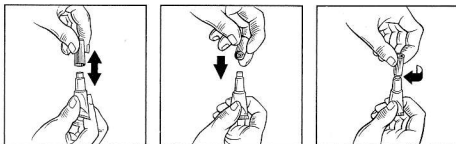


1. Be sure tube is at bottom of pouch.
2. Using scissors, cut the pouch across the top and remove tube.

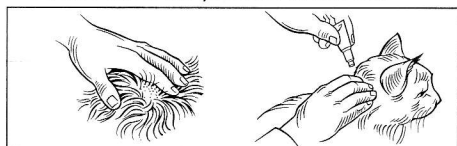
#### HOW TO APPLY

1. Use only on cats or kittens 8 weeks and older and weighing over 9 lbs. Do not apply to cats or kittens weighing less than 9 lbs. Do not use on other animals.
2. Cats should be dry prior to application and remain dry for 24 hours after application.
3. Remove one pouch from the carton. See "HOW TO OPEN" section.
4. Hold tube in an upright position facing away from you and your cat's face and eyes. Pull cap off tube.





5. Turn the cap around and place other end of cap back on tube.
6. Twist cap to break seal, then remove cap from tube.
7. Part the hair on the neck at the base of the skull until the skin is visible. Place the tip of the tube on the skin and squeeze the tube to expel the entire contents directly on the skin. *Do not get this product in your cat's eyes, or allow your cat to ingest this product. The product is bitter tasting and salivation may occur for a short time if the cat licks the product immediately after treatment.* Treatment at the base of the skull will minimize the opportunity for the cat to lick the product. Do not allow the product to run off.



8. Discard empty tube as described in Storage and Disposal.
9. Under normal conditions this product is effective for a month. However, in case of severe flea infestation, retreatment may be necessary earlier than four (4) weeks. Do not retreat more often than once every seven (7) days, not to exceed 4 weekly treatments. After flea control is attained, return to a monthly treatment schedule.

## PRODUCT INFORMATION

The successive feeding activity of fleas on cats frequently elicits a hypersensitivity skin disorder known as flea allergy dermatitis (FAD) or flea bite hypersensitivity. Treatment of cats with Advantage® II Large Cat kills fleas and may reduce the incidence of this condition. Advantage® II Large Cat kills the existing fleas on cats within 12 hours. Reinfesting fleas are killed within 2 hours with protection against further flea infestation lasting for up to four (4) weeks. Pre-existing pupae in the environment may continue to emerge for six (6) weeks or longer depending upon the climatic conditions. Advantage® II Large Cat provides multi-stage flea control effectively breaking flea life-cycle stages for lasting control of flea populations. Advantage® II Large Cat kills adult fleas on cats quickly, within 12 hours, inhibits the development of immature flea life stages and prevents them from reaching the biting adult stage.

Advantage® II Large Cat is waterproof after 24 hours and remains effective following a shampoo treatment or after exposure to rain or sunlight.

Apply monthly treatments for optimal control and prevention of fleas.

To successfully prevent and control fleas, all cats must be treated with their own dose of Advantage® II Large Cat.

Apply according to label instructions, ensuring that the product is applied to the skin, not on top of the fur.

If your cat wears a decorative collar, it may be helpful to remove the collar before application so it doesn't absorb the product.

Remember, your cat needs to be dry at the time Advantage® II Large Cat is applied and remains dry 24 hours after application.

Even indoor cats need protection against fleas because you or other pets in the household may bring fleas into the home.

Fleas in your cat's environment can re-infest your cat. If you have a flea infestation, consider treating your home and yard with appropriate premise products to protect against fleas.

## STORAGE AND DISPOSAL

Do not contaminate water, food or feed by storage or disposal.

**Pesticide Storage:** Store in a cool, dry place inaccessible to children and pets.

**Pesticide Disposal and Container**

**Handling:** Nonrefillable container.

**If empty:** Do not reuse or refill this container. Place in trash or offer for recycling if available.

**If partly filled:** Call your local solid waste agency or 1-800-422-9874 for disposal instructions. Never place unused product down any indoor or outdoor drain.

## LIMITED WARRANTY AND LIMITATION OF DAMAGES

Bayer HealthCare LLC, Animal Health Division warrants that this material conforms to the chemical description on the label. TO THE EXTENT CONSISTENT WITH APPLICABLE LAW, BAYER MAKES NO OTHER EXPRESS OR IMPLIED WARRANTY, INCLUDING ANY OTHER EXPRESS OR IMPLIED WARRANTY OF FITNESS OR MERCHANTABILITY, and no agent of Bayer is authorized to do so except in writing with a specific reference to this warranty. Any damages arising from a breach of this warranty shall be limited to direct damages and shall not include consequential commercial damages such as loss of profits or values, etc.

For more information visit  
[www.petbasics.com](http://www.petbasics.com)

Manufactured For  
Bayer HealthCare LLC, Animal Health Division  
P.O. BOX 390, Shawnee Mission,  
Kansas 66201, USA

Made in Germany

EPA Est. No. 11556-DEU-1  
EPA Reg. No. 11556-152  
February, 2019

86834197  
LV1902